

CHICKAGAMI PARK protects 139 acres located within the headwaters of the Grand River watershed. The park is primarily wooded and includes wetlands, streams and uplands. It is Geauga Park District's intent to protect this natural area in perpetuity.



FLAG CEREMONY, 1962

www.chickagami.net

HISTORY

Chickagami is a Native American word meaning "camp by the lake." In 1941, the Western Reserve Council of the Boy Scouts of America dedicated Camp Chickagami as a year-round camping facility for the Scouts. The property consisted of cabins and camp lean-tos along Lake Estabrook, which was created by damming the branch of the Grand River that ran through the property. Over the decades additional facilities were added to accommodate Scout groups who came for week-long camping in the summer and weekend use in the winter.

In 2003, to reduce operating costs, the Western Reserve Council (WRC) entered into a purchase agreement with Geauga Park District to take over the camp property. After dam inspection and evaluation of Lake Estabrook by the Ohio Environmental Protection Agency (OEPA), it was recommended that the dam be removed and the river corridor be returned to its original flow. Prior to land transfer, the WRC removed the dam and the majority of the buildings. The Scouts continue to have priority access to the property for camping.

NATURAL FEATURES

Chickagami Park is comprised of various stages of mature forest communities, most commonly the beech-sugar maple. Black cherry, hickories, ashes, and tulip trees also inhabit these forests, along with mature plantations of conifers.

Wetland habitats consist of mixed emergent marshes displaying a wide variety of grass species, sedges, rushes and smartweeds. One such large wetland was created when Lake Estabrook was returned to its original flow.

A healthy abundance of wildlife resides in Chickagami Park as well. Notable songbirds found are Purple Finch, Pine Warbler, Great Crested Flycatcher, Wood Thrush, and Scarlet Tanager.



PINE WARBLER

CAMPING

Following the tradition of generations of Boy Scouts who used the property, camping is a featured activity in Chickagami Park.

There are two group camp sites, each consisting of one lean-to shelter, five tent pads, a common fire pit and a grill. Boy Scouts will have first rights to reserve the group camping sites. The existing Seton Cabin is available for Scout use only. Another group site is located at the east end of the activity field.

Eight additional sites are designed to accommodate four or five people. Six sites contain a 12' X 12' tent pad with a fire ring, grill and picnic table. Two sites feature a Geauga Park District signature lean-to with an attached fireplace, outdoor grill and picnic table.



SETON CABIN FOR SCOUT CAMPING AND TENT PADS

AMENITIES & TRAILS

Overlook Shelter, located north of the park entrance, provides a gathering area for up to 75 people overlooking wetlands and stream. A fully accessible trail loops around this picnic area.



OVERLOOK SHELTER

Pine Grove Shelter, located south of the parking area, has capacity for up to 150 people.

A large activity field provides an ideal open area for group activities.

Currently there is just less than a mile of trail and access drive to allow for loading and unloading equipment at the camping areas. A longer hiking trail is planned to be added in the future.



Chickagami Park

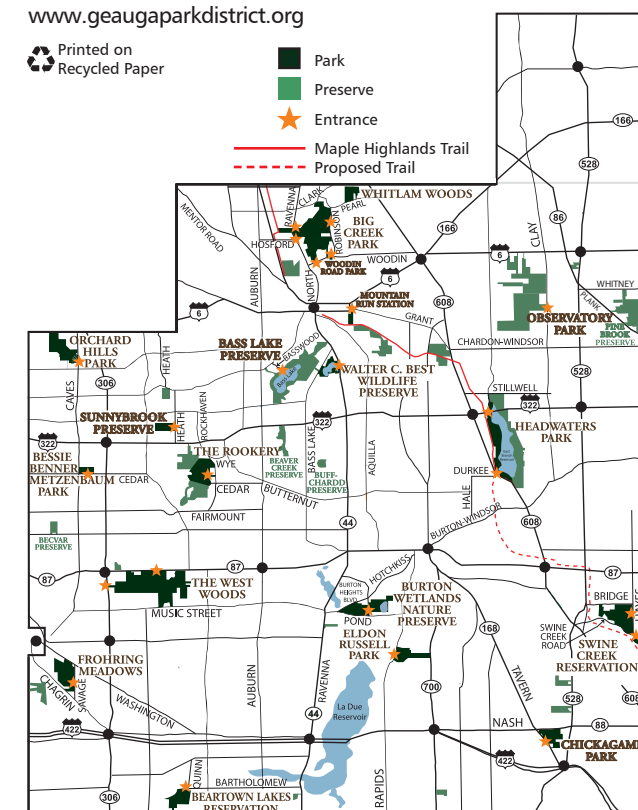


GEAUGA PARK DISTRICT

GEAUGA PARK DISTRICT

9160 Robinson Road, Chardon, Ohio 44024-9148
(440) 286-9516 or (800) 536-4006 (Gauga toll free)
info@geaugaparkdistrict.org
www.geaugaparkdistrict.org

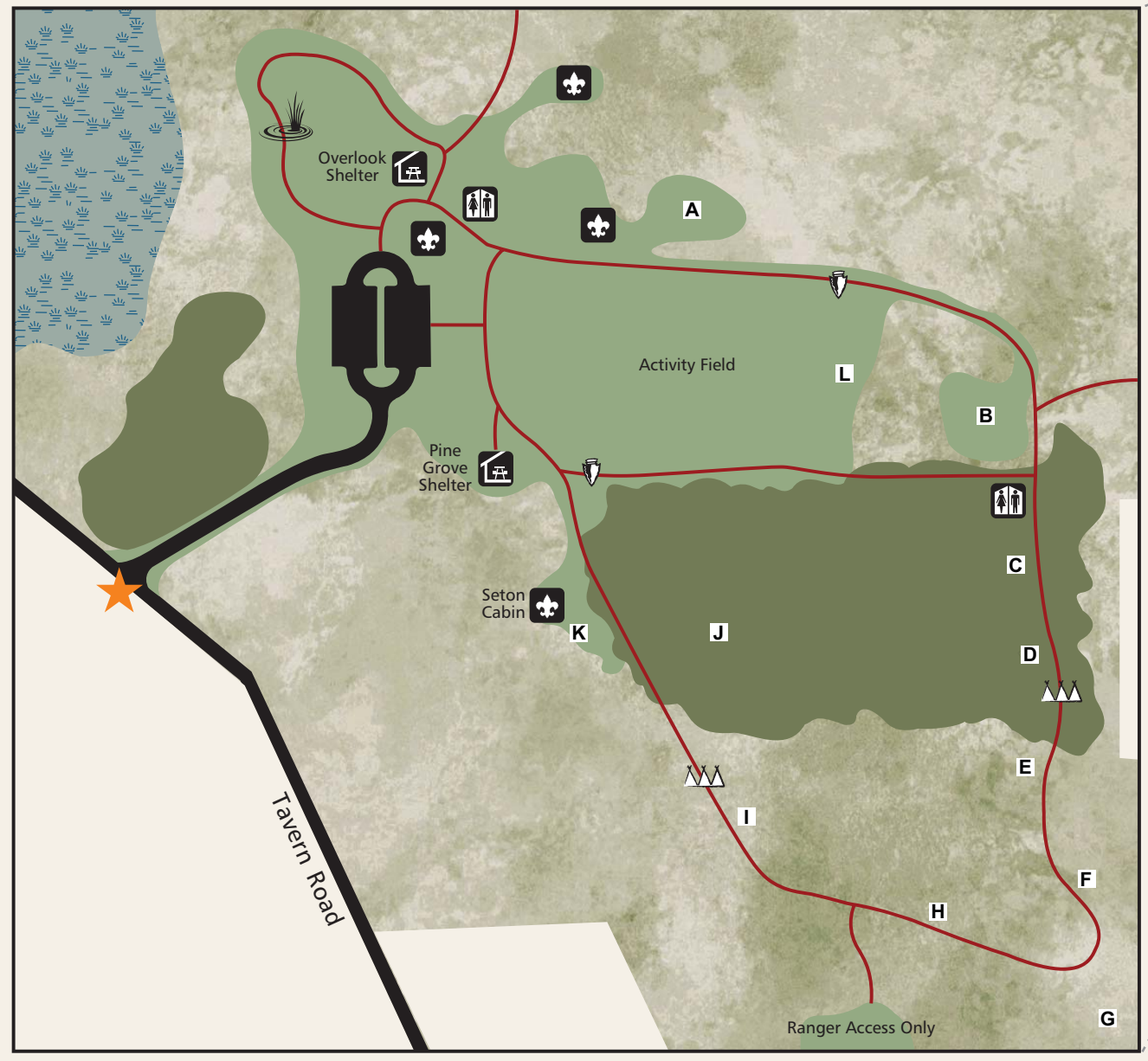
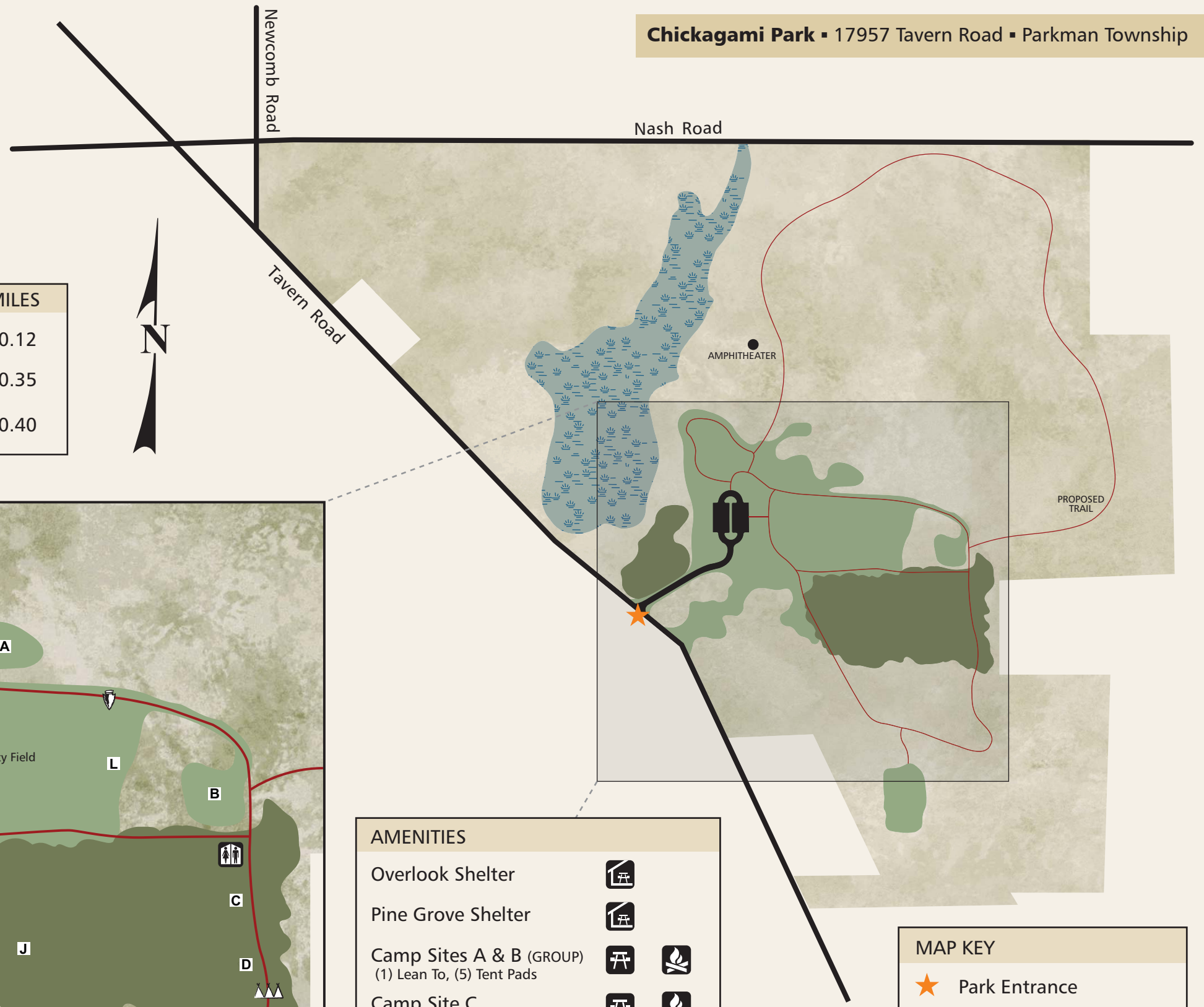
Printed on Recycled Paper



Chickagami Park Lat: N 41 22.530 Long: W 081 4.290 Elev.1,144 5M-9/10



TRAILS		MILES
	Overlook Loop Trail	0.12
	Camping Access Loop North (around activity field)	0.35
	Camping Access Loop South	0.40



AMENITIES	
Overlook Shelter	
Pine Grove Shelter	
Camp Sites A & B (GROUP) (1) Lean To, (5) Tent Pads	
Camp Site C (1) Lean To	
Camp Sites D-I (1) Tent Pad	
Camp Site J (1) Lean To	
Camp Site K (GROUP) (4) Tent Pads (PHONE RESERVATIONS ONLY)	
Camp Site L (GROUP)	

(Camp roadway not plowed in winter)

MAP KEY	
	Park Entrance
	Open Park/woodland
	Conifer Forest (evergreens)
	Wetlands
	Mowed Areas
	Boy Scout Building (Boy Scout Access Only)
	Restroom Location