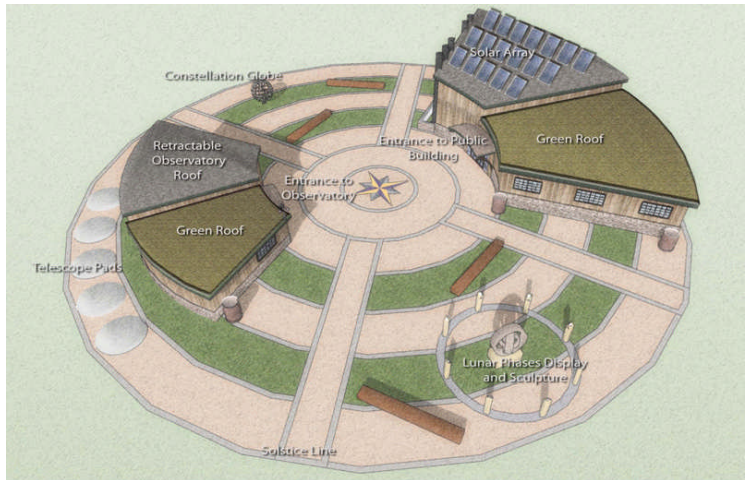


Observatory Park Naming Opportunities

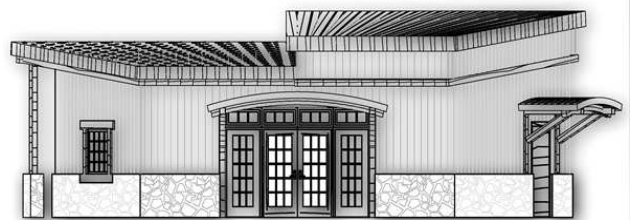
Central Observatory Plaza Naming

140 ft in diameter, the plaza hosts the Public Viewing Building and the Oberle Observatory. The Plaza's three concentric rings alternate between grass and crushed aggregate in order to reduce heat as well as storm water runoff. The Plaza also serves as the "Sun," which is the starting point of the Planetary Trail. **\$200,000**



Oberle Observatory Sponsorship *(Already Selected)*

The Oberle Observatory Building houses the Oberle Telescope, the Seismograph Station and the Weather Station. With doors on three sides, the building allows for flow-through traffic and is wide enough to accommodate a class looking at and through the telescope. A partially retractable roof with a hand crank provides for direct sky viewing. **\$50,000**



INTERIOR SPACE



Planetarium Dome

The Planetarium Dome is located in the Public Viewing Building. The 18' wide by 9' deep dome is suspended from trusses, placed optimally for star projection. It is large enough for approximately fifty children to sit under the dome in chairs. **\$25,000**

Seismograph Station (Already Selected)

The Seismograph Station is located in Oberle Observatory. It will be connected with the Ohio Seismic Network and the U.S. Geological Survey's National Earthquake Information Center. The seismograph is placed at a three feet depth below the surface and will be located about ten feet off the edge of the Central Plaza. A computer display panel is located in the Educational Window on the exterior wall and will showcase time-lapse data and other interesting videos relating to seismology. **\$15,000**



Weather Station (Already Selected)

The Weather Station is mounted on the roof of the Oberle Observatory. The station includes an anemometer and a shielded temperature gauge. It records data that is then transmitted onto a display screen on the Educational Window. Students can go online to see the recorded weather data for Observatory Park as well. **\$10,000**

Tech Center

The Technical Center is housed in the Oberle Observatory. It is a temperature-controlled room housing the seismograph equipment as well as the computers required for recording images seen through the telescope. The computers then provide those images to the flat-screen monitors on Oberle Observatory's Educational Window as well as in the Public Viewing Building. **\$10,000**

INTERIOR ITEMS

Low-Energy LED Interior Lighting

The lights within the building are low-energy LED lights. This type of light uses less electricity and is thereby more environmentally conscious. While these fixtures are automatically controlled, standard commands may be overridden for specific programming needs. **\$40,000**

Planetarium Projector (Already Selected)

The Planetarium Projector is stationed on the Public Viewing Building. It is made to function with our 18' x 9' planetarium dome. The combination will allow for limitless experiences, as the projector is portable and can be used for offsite educational presentations. **\$15,000**

Restoration of Oberle Telescope (Already Selected)

The restoration of the Oberle telescope is an important component of Observatory Park. The length of the telescopic tube is to be rehabilitated, the mirror refinished and the electronic components updated and retuned. **\$10,000**



CCD camera for Oberle Telescope

This digital camera has the capability and important function of capturing images from the Oberle telescope which will then be transferred across the plaza to the Public Viewing Building where they can be projected on two 5' x 7' screens. Though seemingly a small part of Observatory Park, it captures images of the night sky, providing visitors with a memorable experience across the Central Plaza that would not be possible without this piece of equipment. **\$5,000**

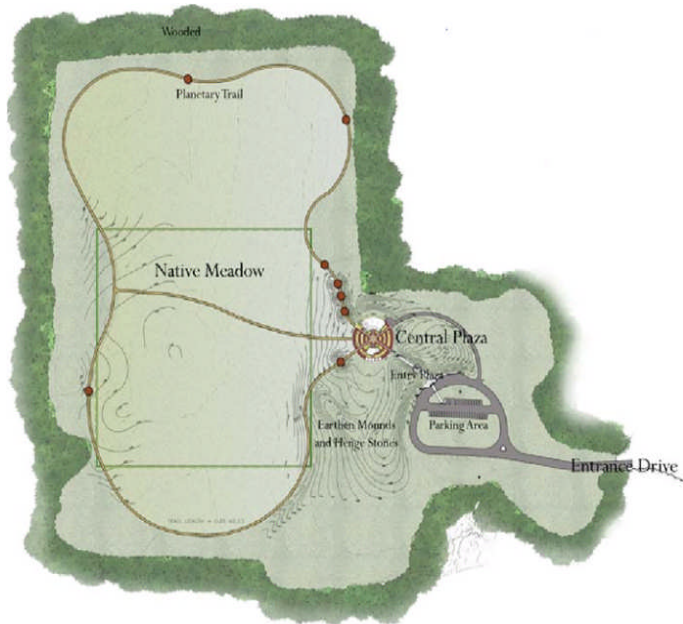
Eyepieces for Oberle Telescope

In order to accommodate our wide variety of programming and events, we need to have multiple grades of eyepieces. A select "high end" version will be reserved for special events. **\$5,000**

Digital Projectors (2 opportunities, 1 already selected)

Images taken from the telescope and transferred through the CCD Camera (mentioned above) can be projected to the Public Viewing Building across the plaza onto two 5' x 7' projection screens where visitors are able to enjoy an indoor viewing of the night skies. **\$2,500 each**

EXTERIOR SITE FEATURES



Planetary Trail

The Planetary Trail begins with the plaza representing the sun. There are different color aggregate 24 ft circles for each planet along the way. In total, there are eight planetary circles that make up this pathway. Individual naming opportunities for the eight planetary stations are available on page six. **\$100,000**

Weather Trail (Already Selected)

The Weather Trail cuts through the middle of the Planetary Trail. Stations are being developed by Dan Best, GPD Senior Naturalist, and Jann Glove, Educational Consultant. **\$50,000**

Low-Energy LED Exterior Down Lighting (Already Selected)

The parking lot lights are Beta Fixtures that have dual level low energy LED lights with photometric sensors on each fixture. This means that each light automatically dims to half brightness as the light around it increases. The low standing poles that line the walkway and Central Plaza would normally emit standard white light however we have enhanced them in order to make them emit red light. This means that as you head away from the parking lot, the light will make the transition from white to red and allow a visitor's eyes to adjust as they get closer to the Central Plaza. This type of light is more environmentally friendly and while these fixtures are automatically controlled, we have the power to override the standard commands for our specific programming needs. **\$50,000**

Solar Panel Array

Twenty-seven 3' x 5' solar panels are aligned on the roof of the Public Viewing Building. Not only will they generate electricity for the facility, but they will also serve as a teaching tool regarding solar energy. **\$35,000**

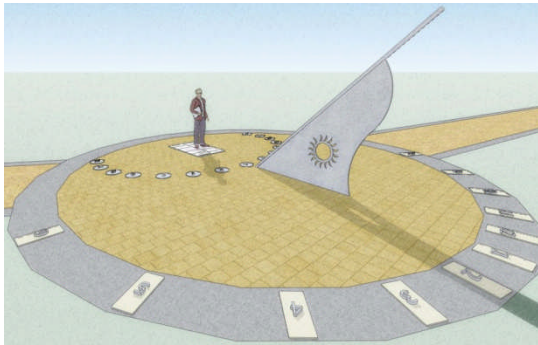


Green Roof (2 opportunities)

2' x 3' pre-vegetative blocks of native Ohio Sedum grown in Sandusky make up the live "green" roof that's on half of each building. **\$20,000 -Public Viewing Building**
\$10,000 -Oberle Observatory

Earthworks Henge *(Already Selected)*

The Earthworks Henge is located south of the Central Plaza. Henge markers are located atop a mound that lies near the Planetary Trail. They are set up to align with features in the night sky. **\$25,000**



Sundial Entry Plaza *(Already Selected)*

The Entry Plaza is 24 feet in diameter with two sundials. The first is a human sundial where you are able to stand on the marked base according to the month. The other is a large more traditional sundial that is pictured here. **\$25,000**

Compass Rose *(Already Selected)*

The Compass Rose lies at the center of the Central Plaza and at the heart of it all. It represents the Sun and is the starting point for the Planetary Trail. The picture to the left shows the beautiful design made up of 4" x 4" bricks that acts as the focal point of the park. **\$20,000**



Wind Turbine

The Wind Turbine stands on the mound between the parking lot and the Central Plaza. This vertically aligned and low wind turbine can provide power during low wind activity while still tolerating wind speeds up to 105 miles per hour. The turbine is limited to 42 feet, as it is in accordance with residential standards. This limited height is more wildlife friendly. **\$16,000**

Sloped Amphitheater *(Already Selected)*

The Sloped Amphitheater is a grassy hillside that visitors can lay back on and look at the night sky over the roof of the Public Viewing Building. This amphitheater can also be used for presentations, programs, and general nature observation.

\$10,000



Sky Monitor

SKYMONITOR is a project of the International Dark-Sky Association to establish a network of Night Sky Brightness Monitors (NSBM) to provide continuous, long-term measurements on the state of the night sky. The heart of this network is a solar-powered, calibrated photometer which operates in a nearly autonomous fashion. Data will be collected at a number of sites around the world, including Observatory Park, transmitted to a central station where it will be archived and made available to the public via the Web. This project has been supported by the International Dark-Sky Association (IDA), the National Science Foundation and the Vatican Observatory. **\$10,000**

Day Garden *(Already Selected)*

The Day Garden resides on the western edge of the Central Plaza alongside the Weather Trail. This garden features native plants with daytime blooming flowers such as Goatsbeard and Morning Glory. These plants were strategically selected partially for the daytime insects they promise to attract. **\$10,000**

Night Garden *(Already Selected)*

The Night Garden also resides on the western edge of the Central Plaza. It is located opposite the Day Garden and across the Weather Trail. It features native plants that thrive on moonlit skies and highlights evening and nighttime blooming flowers such as Evening Primrose and Four O'Clock. These will also attract nighttime insects. **\$10,000**



Planetary Stations *(8 opportunities, 3 selected)*

There are eight stations along the Planetary Trail. Each station will be designated for a different planet highlighting its most important features on interpretive panels. The stations will be accurately scaled along the Planetary Trail heading out from the sun (the Central Plaza). **\$10,000 each**

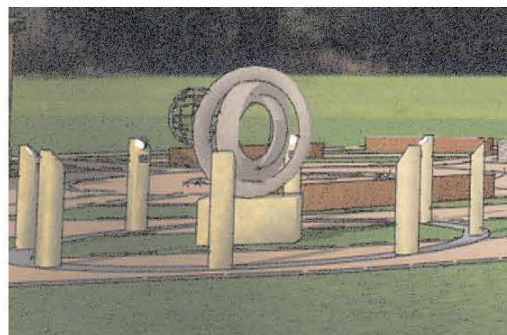
Human Orrery

Based on curriculum developed in Ireland, this project acts as a kinesthetic, hands-on approach to a diagram of how planets rotate and revolve around the sun. Markers are placed in the ground to indicate planetary pathways and act as a starting point for this interactive learning experience. Each person must physically occupy a different planetary position and by taking the role of a planet they are able to see how planets travel in relation to one another. In collaboration with the Armagh Observatory in Ireland (their model is pictured on the left), we are able to create a like model in our very own Observatory Park where it will be situated near the Central Plaza and will be most beneficial for educational programming. **\$7,500**



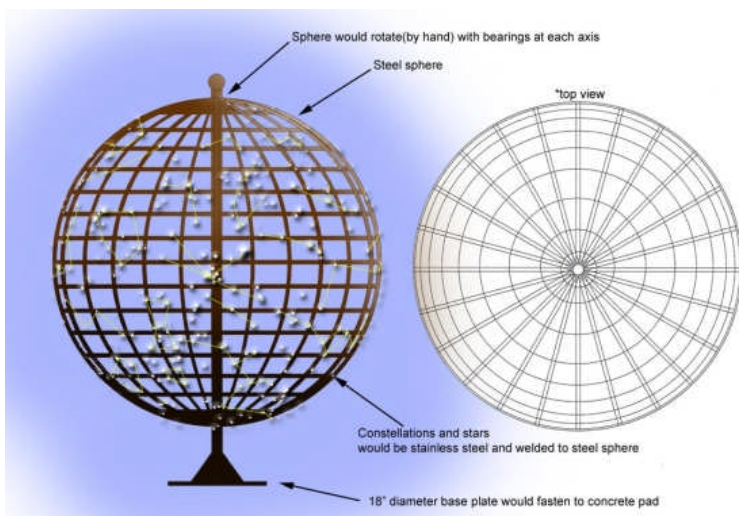
Lunar Phases Display *(Already Selected)*

The Lunar Phase Display is a series of moon phase columns that are centered around the Lunar Sculpture. Each column represents a different phase of the moon such as First Quarter, Waxing Crescent and Waning Gibbous. **\$6,000**



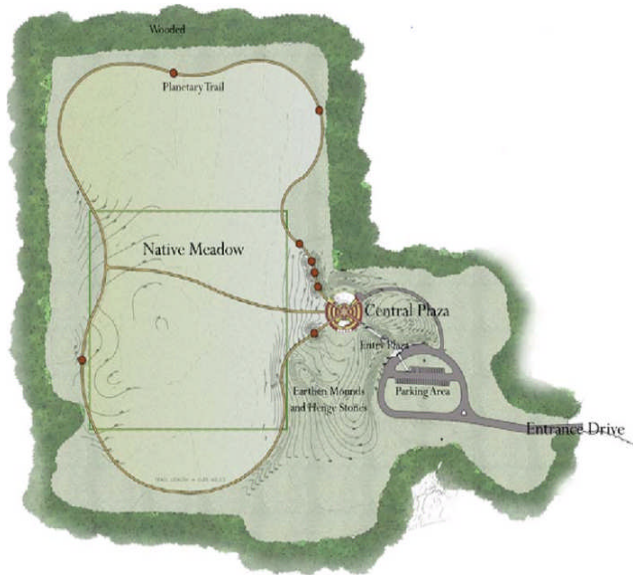
Lunar Sculpture *(Already Selected)*

The centerpiece of the Lunar Display depicts a series of rings that create an abstract representation of the phases of the moon. This work of art is surrounded by columns, each detailing a different Lunar Phase embodied in the sculpture. **\$5,000**



Constellation Sculpture *(Already Selected)*

The Constellation Sculpture stands on the Central Plaza opposite the Lunar Display. It is a metal globe that outlines the constellations with ball bearings. The piece is brushed steel and provides a great on site reference to the star formations we see in the night sky. **\$5,000**



Marked Pyramid Outline

The Pyramid Outline is the exact size of the base of the Great Pyramid of Giza. It demonstrates how Egyptians used the stars to align the pyramids. The Pyramid cornerstones are the same size as those of the Great Pyramid of Giza and have been integrated into the Planetary Trail. During programs, a laser beam can be used to indicate the actual size of the outline. **\$5,000**

Weather Stations (4 each) on Weather Trail

Four Weather Stations on the Weather Trail will provide interactive educational opportunities to learn more about the Sun, Wind, Water and Atmosphere. **\$5,000**

Pluto Feature (Already Selected)

The Pluto Feature is along the Planetary Trail and properly aligned with the eight planets. While it will not have a full station, Pluto is a site feature that highlights the unique characteristics of this former planet, reclassified as a dwarf planet in 2006. A nebulous sphere depicts its scarce nature and widely renowned reputation. **\$2,500**

Asteroid Belt Feature

The Asteroid Belt Feature is comprised of a field of boulders along the planetary path between the Mars and Jupiter Planetary Stations. When the solar system was formed, the left over material became asteroids. These asteroids were unable to compact and form a planet of their own due to the strong force of Jupiter's nearby gravitational pull. If and when these asteroids collide, the resulting debris has the potential to enter the Earth's atmosphere as a meteoroid. While sometimes these appear as shooting stars, there have been occasions where the impact of a meteor on the Earth's surface is believed to have triggered major events such as the extinction of the dinosaurs. While this is all speculation through scientific study, the Asteroid Belt Feature highlights the importance of this existing band that lies between Mars and Jupiter. **\$2,500**

Natural 16' Wood Seating (4 opportunities) on Central Plaza

This extended 16 feet wooden seating will provide for those wishing to take a moment to relax and contemplate all they've experienced. Each piece is movable, which will prove to be useful for programming purposes. **\$2,500 each**



Telescope Pads (5 opportunities)

Five Telescope Pads are inset in the Central Plaza on the south side behind Oberle Observatory. These telescope pads will allow visitors from all over to set up their own amateur telescopes of all levels.

\$1,500 each

OBSERVATORY PARK STEWARDSHIP ENDOWMENT FUND

This endowment fund will support educational programs and ongoing Observatory Park land management and park maintenance needs. Gifts of any amount may be made to this endowment fund.

Named Endowment Funds within the Observatory Park Stewardship Fund

Named endowment funds may be established with a minimum gift of \$10,000. These individual funds will collectively help comprise the Observatory Park Stewardship Endowment Fund managed by The Cleveland Foundation, Geauga Park District's partner in assuring a sound financial future for the district. Donors will be permanently recognized in future Geauga Park District annual reports and at Observatory Park.